



The City of Solon
34200 Bainbridge Rd.
Solon, OH 44139

PRSR STD
US Postage
PAID
Cleveland, OH
Permit #1045

EDDM

Postal Customer
Solon, OH 44139

CITY OF SOLON STORM WATER UPDATE 2006-2012



Other Preventative Maintenance Activities

Planned preventative maintenance of our sanitary and storm sewers is one of the strongest tools the city may possess against Mother Nature. These programs provide for systematic inspection, detection and corrective measures before problems occur or before they develop into major defects. Our dedicated crew completed the following:

- **STORM SEWER MAINS** have been **CLEANED** on 66 streets and over 3400 catch basins have been cleaned.
- **STORM SEWERS REPAIRED**, replaced or improved include 41 storm mains, 31 culvert pipes and over 200 lateral connections.
- 713 **CATCH BASINS** have been **RECONSTRUCTED** or newly installed.
- **CCTV INSPECTIONS** have been completed for **SANITARY SEWER MAINS** on 115 streets and **STORM MAINS** on 152 streets.
- **SANITARY SEWER REPAIRS** include six sewer mains, 14 manholes and 118 laterals.
- **CLEANED** and graded **STORM SEWER OUTFALLS** along creeks and streams at 39 locations.
- **CLEANED** and regraded **ROADSIDE DITCHES** at 71 locations.
- **PRIVATE PROPERTY DYE TESTS** have been performed at 195 locations after finding defects through smoke testing of **SANITARY SEWERS**.
- 34 HOA's and property owners are actively involved in our **PRIVATE PROPERTY DETENTION/RETENTION BASIN INSPECTION** and maintenance program.
- Using inspection reports and video, 13,825 linear feet of **SEWER PIPES** were cleaned, **PRESSURE TESTED SEWER JOINTS AND GROUDED** if necessary throughout the city.
- Before and after rain events and at least monthly, our Sewer Division crews **INSPECTED AND CLEANED** 160 regular locations where storm water flows into inlets or bottleneck locations.



In 2008 the Sewer Division completed a **PREVENTATIVE MAINTENANCE CLEANING** cycle through our entire **SANITARY SEWER** system and have since completed 60% of another cleaning cycle.



Storm Water Committee

Hal Becker, <i>Chairman</i>	Kerry Volsky
Ken Hejduk	Drew Kirian
Charles DeBordeau	Roger Newberry
Lou Ferri	Shirley Schluchter
Chris Emshoff	

Council

Ward 1 Richard A. Bell	Ward 5 Nancy E. Meany
Ward 2 Robert N. Pelunis	Ward 6 Edward H. Kraus
Ward 3 Toni M. Richmond	Ward 7 William I Russo
Ward 4 William D. Mooney	

City Employees

John Busch, PE	<i>City Engineer</i>
Tom Bandiera	<i>Director of City Services</i>
Dan Driscoll	<i>Construction Project Administrator</i>
Bill Drsek	<i>Sewer Division Manager</i>
Barb Janca	<i>Stormwater Committee Secretary</i>
Marcia Rizzo	<i>Sewer Division Secretary</i>



It has been seven years since we experienced two of the worst rain storms that have ever occurred in our city. As a result of the flooding and damage caused by those storms, the city embarked on a comprehensive mission to identify and address our storm water management needs.

Some of the programs initiated to identify and evaluate problems in our storm water management system and plan infrastructure improvement projects include flow monitoring, flow modeling, smoke testing and dye testing. The map provided with this year's message clearly shows that many improvements, large and small, have resulted from this information and many more projects are planned for this year. These accomplishments are reported to our Citizen's Committee on Storm Water which was formed in 2006 and still meets quarterly to this day.

Public involvement has also played a major role in the success of our improved storm water management program. Citizens actively participate in our private property detention/retention inspection and maintenance program. Residents have also become better informed about their role in storm water quality and management through activities such as our pond maintenance and rain garden workshops and our environmental survey.

As you can see, there has been a considerable amount of progress since the storms of 2005 and 2006. These accomplishments have been made possible by the commitment of an entire community working toward a common goal. Though it is impossible to completely protect ourselves from every possible storm event, we are effectively managing severe rainfalls and making improvements that will lessen the devastating effects resulting from storms as experienced in the past. Our storm water system has been tested and served us well during several large storms in more recent years, including 2011 when the amount of rainfall we experienced surpassed our previous record by 10 inches.

Storm water management will remain among our highest priorities. The city's daily preventative maintenance, annual infrastructure improvements and regular public education and involvement programs will continue. We thank you for your continued cooperation and participation in our storm water management program and look forward to another productive year.

Mayor Susan A. Drucker

The City of Solon
OFFICE OF THE MAYOR

34200 Bainbridge Rd.
Solon, OH 44139-2955
Phone: (440) 248-1155
Fax: (440) 349-3080

MAYOR SUSAN A. DRUCKER

STORM WATER MANAGEMENT PROJECTS COMPLETED BETWEEN 2006-2012

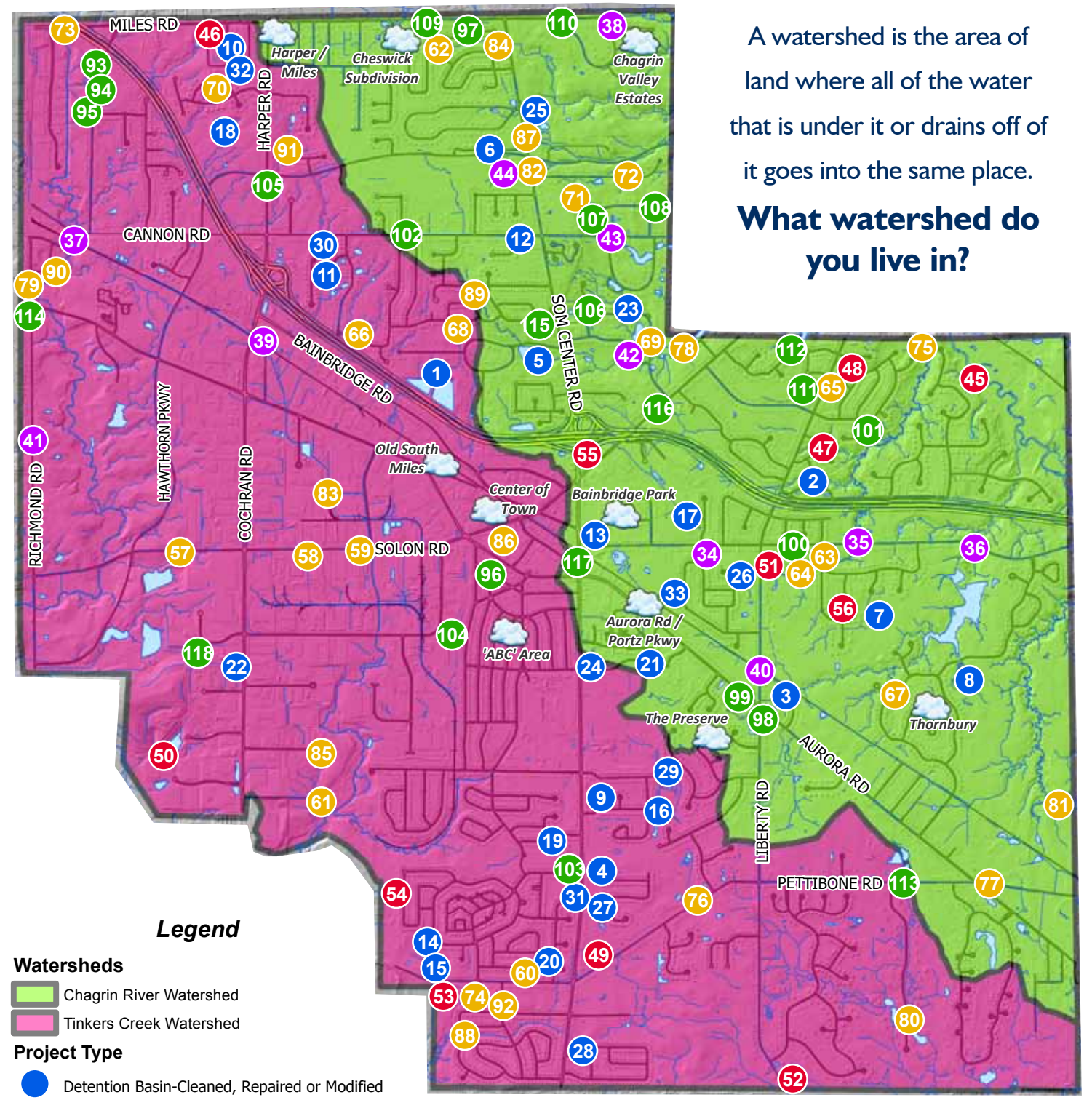
Detention/Retention Basin	
1	422 Detention Basin
2	Aberdeen Detention Basin
3	Andre Lane
4	Bramble Lane Detention Basin
5	Briarhill Lake Dam
6	Brighton Park
7	Creekside Detention Basin
8	Dorset Lane Detention Basin
9	Heritage Estates
10	Hidden Creek Retention Basin
11	Hidden Lakes / Stratford Detention Basin
12	High Point Detention Basin
13	Historical Society
14	Liberty Hills Detention Basin
15	Liberty Hills Detention Basin
16	Navajo Trail
17	North Huntington Detention Basin
18	North Park Detention Basin
19	Outley Park Detention Basin
20	Popham Place Detention Basin
21	Portz Parkway
22	Service Department Detention Basin
23	Sherbrook Pond
24	Solon Library
25	SOM Center Road 5227
26	South Huntington Detention Basin
27	Southside Park Detention Basin
28	Summerset Detention Basin
29	The Preserve
30	Westminister Detention Basin
31	Winchester Detention Basin
32	Woodall Lane
33	Woodbury Detention Basin (Constructed)

Creek/Streams	
43	Sherwood Pond
44	South Sulphur Springs
45	38599 Gaelic Glen
46	5058 Hidden Creek
47	Colonial Forest
48	Deer Run Oval
49	Fire Station #3
50	Fountain Parkway
51	Liberty Road
52	Liberty Road near city border
53	Pettibone Road
54	Selworthy Lane
55	SOM Center culvert at 422
56	Windy Willow Drive

Erosion Control	
57	28800 Solon Road
58	30400 Solon Road
59	31200 Solon Road
60	Ashdown Dr.
61	Beaver Meadow
62	Boulder Creek
63	Creekside Trail
64	Creekside Trail (West)
65	Deer Run Oval
66	Elm Hill Drive
67	Flanders Drive
68	Haverhill Drive
69	Lakeview Drive
70	Leighton Court
71	McAfee Drive
72	Meadow Lane
73	Miles Road at Naiman Parkway
74	North Burr Oak Dr.
75	North East Lift Station
76	Pettibone Road
77	Pettibone Road East
78	Quartermane Creek
79	Richmond Road
80	Rollingbrook Trail
81	Root Road
82	RT 91 Culvert
83	Schwebel
84	Shadowbrook Drive

85	Solon Industrial Pkwy.
86	Solon Police Department
87	SOM Center Rd. 5227
88	South Burr Oak Drive
89	Springside Lane
90	Valley Lane
91	Wedgewood Drive
92	White Oak Drive

Storm Sewer	
93	5135 Brainard Road
94	5161 Brainard Road
95	5230 Brainard Road
96	Allotment Phase 2B
97	Aspen Glen & Boulder Creek
98	Aurora & Liberty Road
99	Aurora Road
100	Bainbridge Road (New)
101	Bunker Hill Drive
102	Cannon Road
103	Cromwell Drive
104	Davis Industrial Pkwy.
105	Harper Road
106	Ledgebrook Lane
107	McAfee Drive
108	McAfee Drive 34895
109	Miles Rd at Lansdowne Lane
110	Miles Road
111	O'Neil Drive
112	Pepperwood I (New)
113	Pettibone Road (New)
114	Richmond Road & Aurora Road
115	Skyview Drive
116	Solon Road
117	Station St. at SOM Center Rd.
118	Vactor Receiving Station



Legend

Watersheds

- Chagrin River Watershed
- Tinkers Creek Watershed

Project Type

- Detention Basin-Cleaned, Repaired or Modified
- Culvert - Replacement
- Creek / Stream Cleaning or Ditching
- Erosion Control - Bank Stabilization, Headwall or Gabion Basket Installation
- Storm Sewer
- Sewer Smoke Testing
- Hydrography
- Lakes
- Railroads

1 inch = 3,600 feet

A watershed is the area of land where all of the water that is under it or drains off of it goes into the same place.

What watershed do you live in?



www.solonohio.org