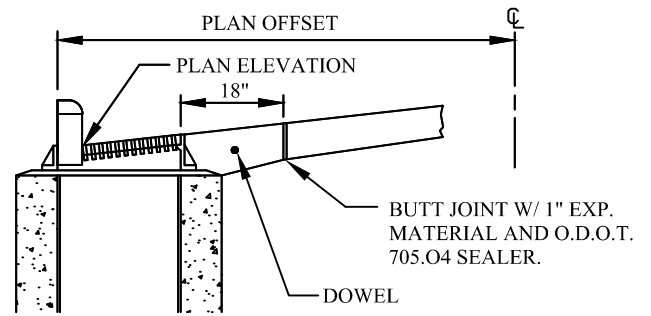
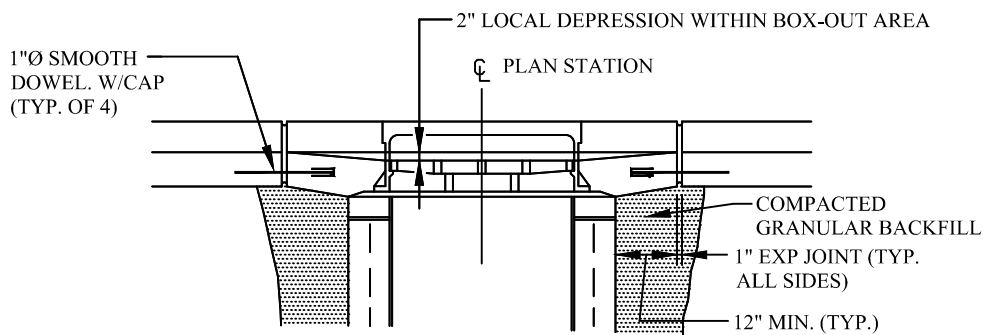
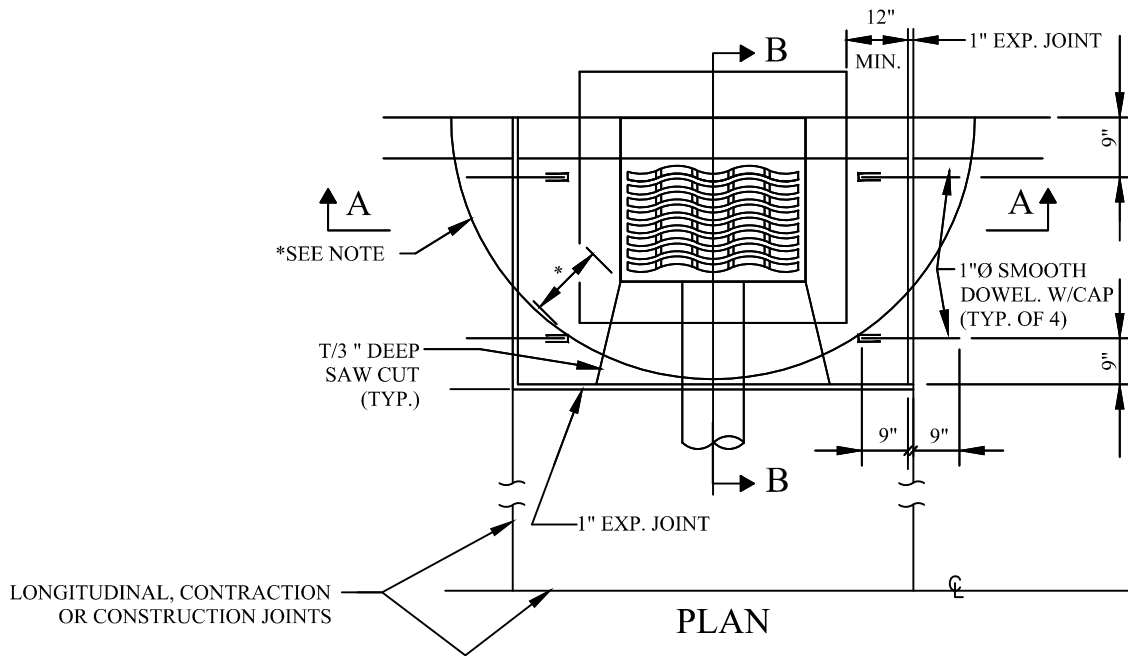


*NOTE:
 AN ALTERNATE INLET BOX-OUT TO BE USED WHERE RECTANGULAR BOX-OUT DOES NOT FIT PAVEMENT JOINT PATTERN OR WHERE DIRECTED BY ENGINEER. JOINT TO BE A SMOOTH BUTT JOINT WITH 1" EXPANSION MATERIAL. DELETE SMOOTH DOWEL BARS AND CAPS. * = 12" TO 24", AS DIRECTED BY ENGINEER.

GENERAL NOTES:
 1. ALL WORK TO CONFORM TO O.D.O.T. ITEM 451. UNLESS OTHERWISE SPECIFIED.



SECTION B - B



SECTION A - A

CITY OF SOLON ENGINEERING DEPARTMENT	STANDARD DETAIL	CURB INLET BOX OUT FOR TYPE 6 CURB
		P-12A