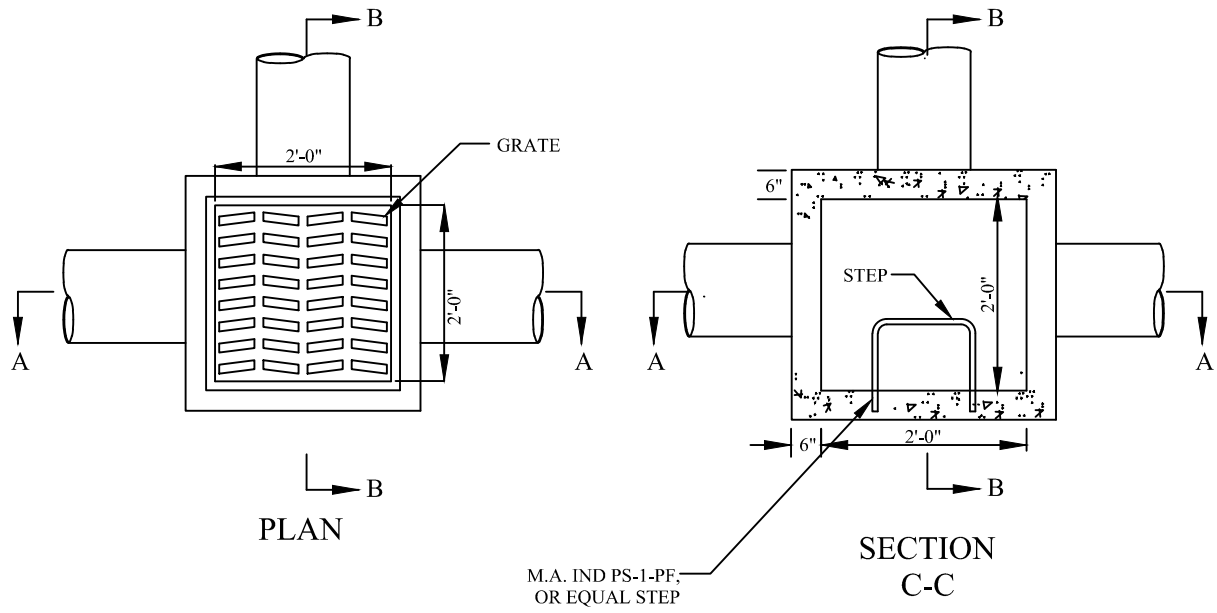


NOTE: CONCRETE, CAST IN PLACE, TO BE CLASS C. ALL PRECAST CONCRETE SHALL MEET THE REQUIREMENTS OF 706.13 WITH 6 ±2% AIR VOID CONTENT IN THE HARDENED CONCRETE AND BE MARKED WITH THE CATCH BASIN NUMBER.

REINFORCING IN THE TOP TO BE No. 4 BARS 6" CENTER TO CENTER. FOR STANDARD No. 2-3 USE 8 BARS.



CITY OF SOLON ENGINEERING DEPARTMENT	STANDARD DETAIL	2-2B CATCH BASIN
		ST-6B